

Socio-demographic Profile South Asian Americans



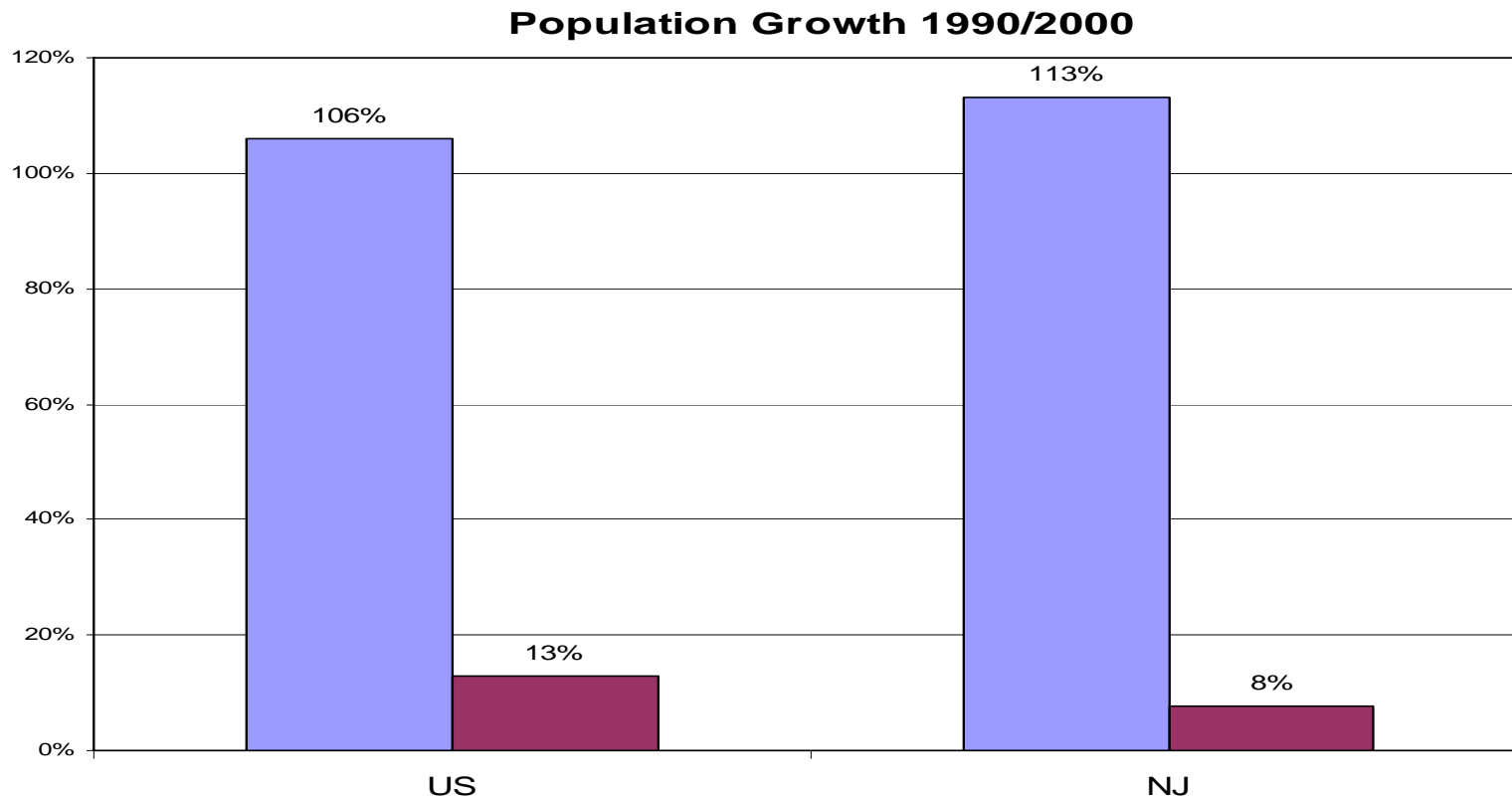
South Asian Americans

(Definition:

Asian Indian, Bangladeshi, Pakistani, Sri Lankan)

- Census 2000 US:
281 Mil. Total Pop.
1.9 Mil. South Asians
279.5 Mil. Non-S. Asians
- Growth 2000/1990 US:
13% Total Pop.
106% South Asians
13% Non-S. Asians
- Census 2000 NJ:
8.4 Mil. Total Pop.
184.5 Thou. S. Asians
8.2 Mil. Non-S. Asians
- Growth 2000/1990 NJ:
9% Total Pop.
113% South Asians
8% Non S. Asians

Population Growth: South Asian versus Non-South Asian 1990 - 2000 - US versus NJ



*Working Definition: Asian Indian, Bangladeshi, Pakistani and Sri Lankan

■ South Asians* ■ Non-South Asians*

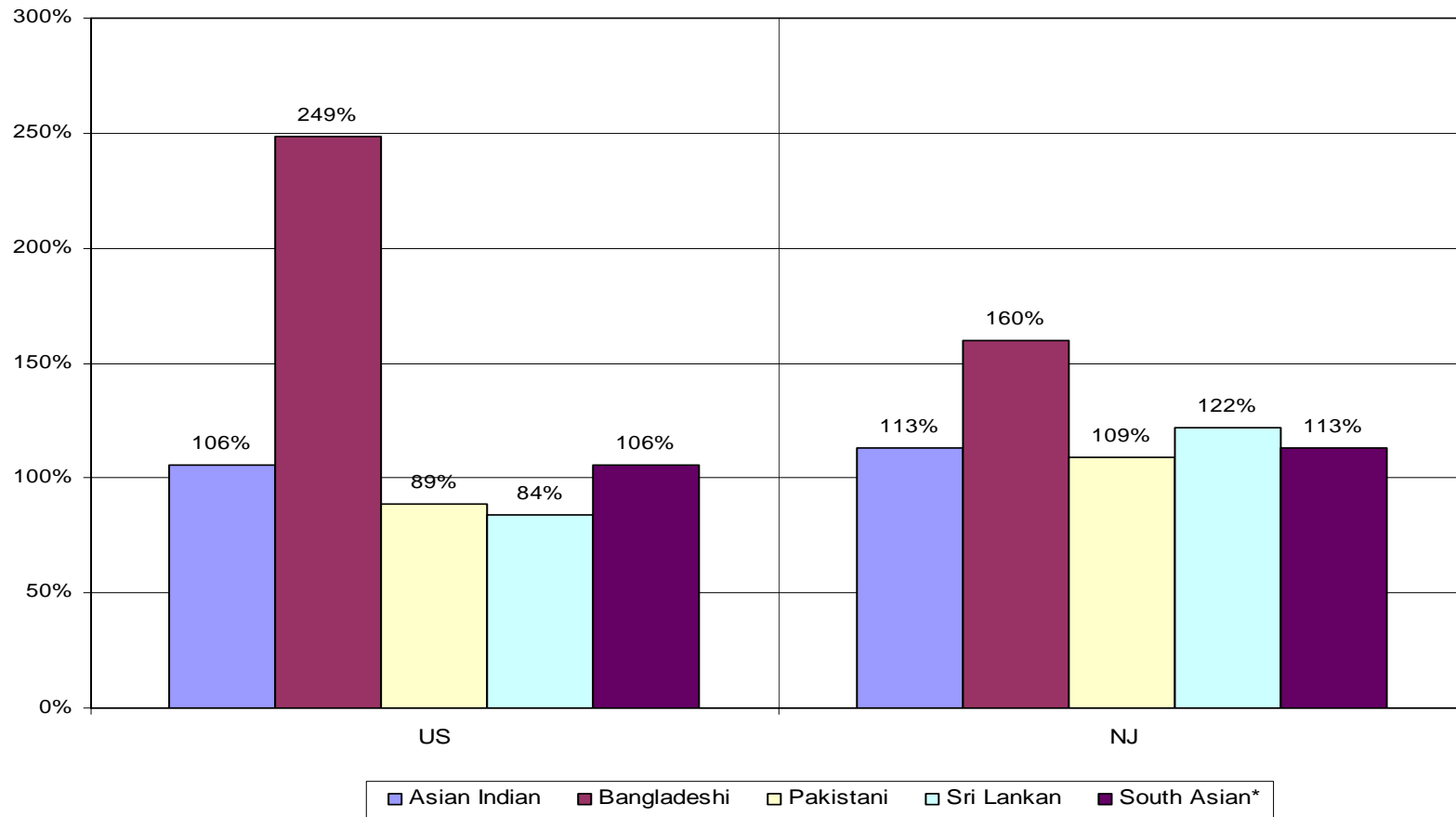
Source: US Census

UMDNJ Office of Policy & Project
Management for UMDNJ Office of
Multicultural Affairs

1/25/2005

Percentage of Growth South Asian Subgroup Population 1990 – 2000 US versus NJ

Percentage of Growth South Asian Subgroup Population 1990 - 2000
US vs NJ

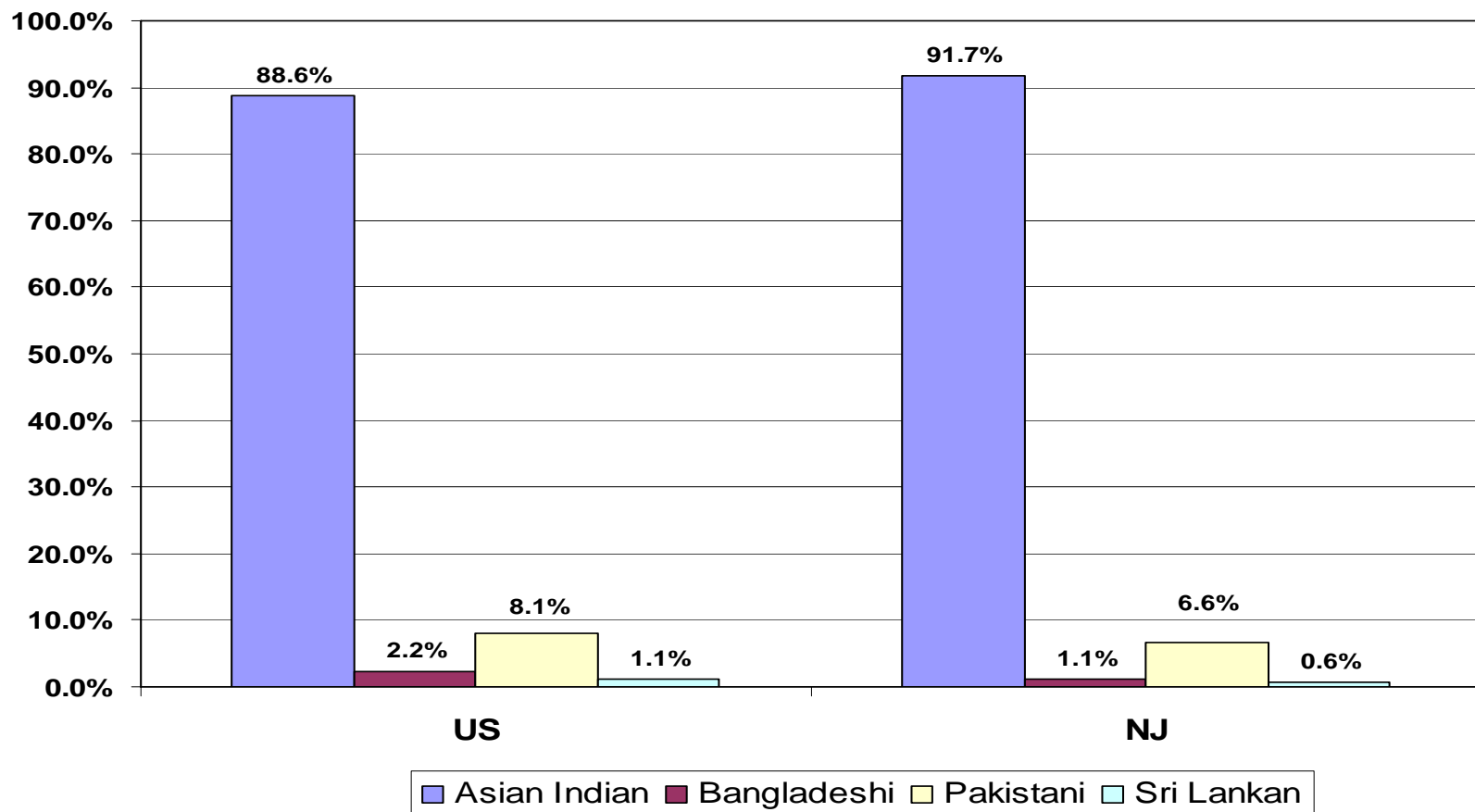


Source: US Census

UMDNJ Office of Policy & Project
Management for UMDNJ Office of
Multicultural Affairs

South Asian Americans: 2000

Subgroup Composition %: US/NJ

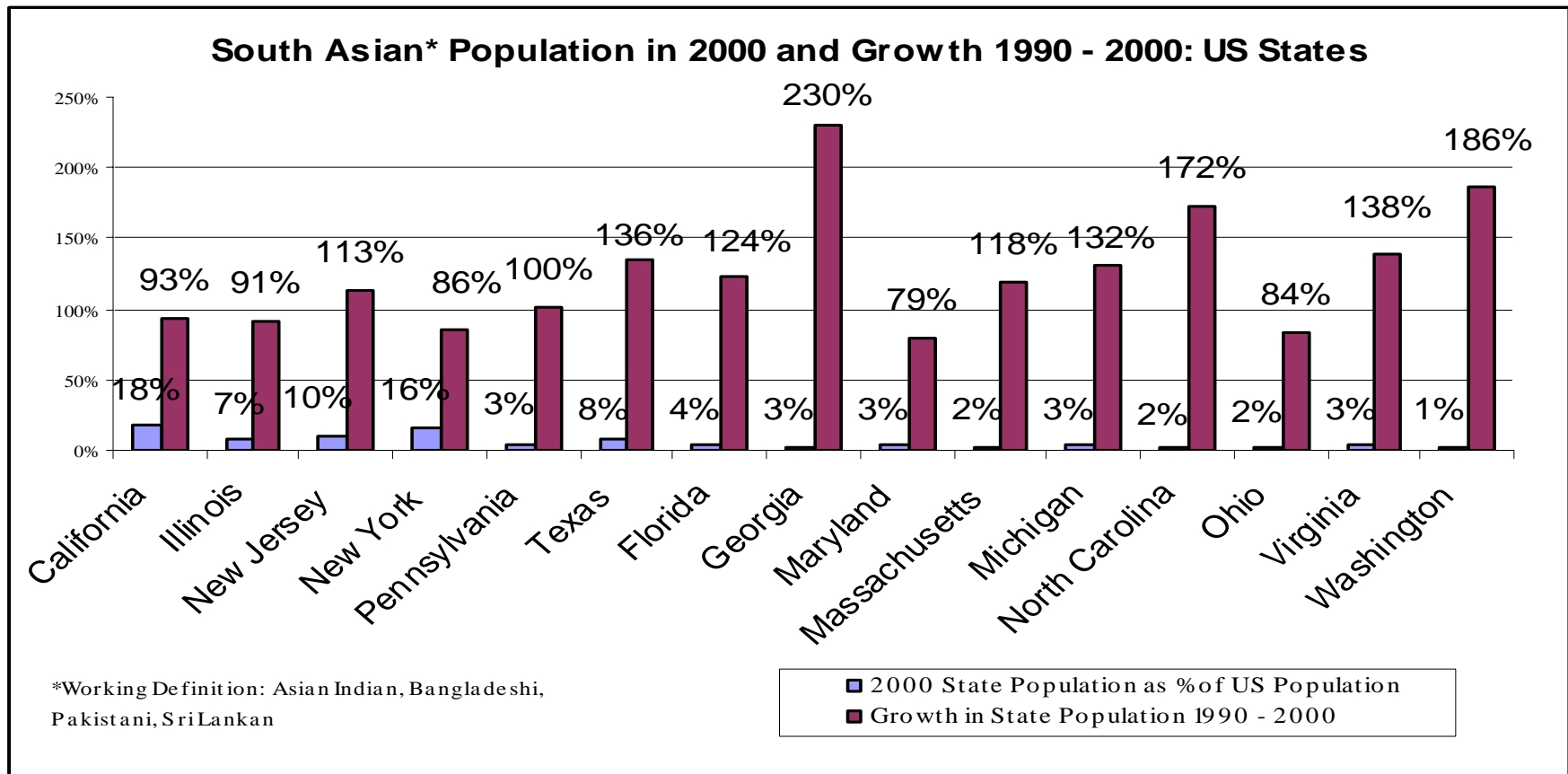


Source: US Census

1/25/2005

UMDNJ Office of Policy & Project
Management for UMDNJ Office of
Multicultural Affairs

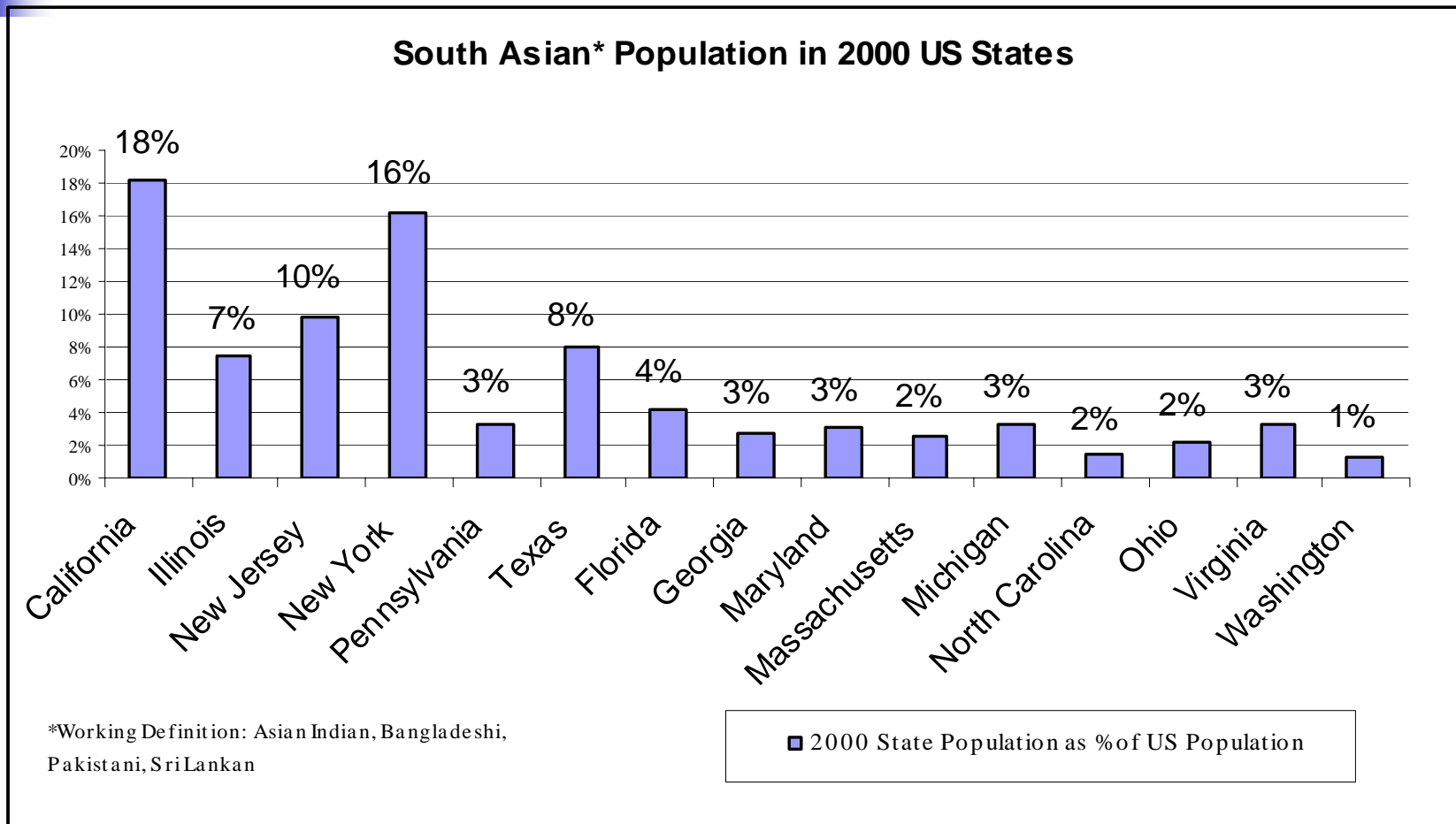
South Asian American Population in 2000 & Growth 1990 - 2000: Geographic Distribution – US by State



Source: US Census

UMDNJ Office of Policy & Project
Management for UMDNJ Office of
Multicultural Affairs

South Asian American Population Geographic Distribution – US by State

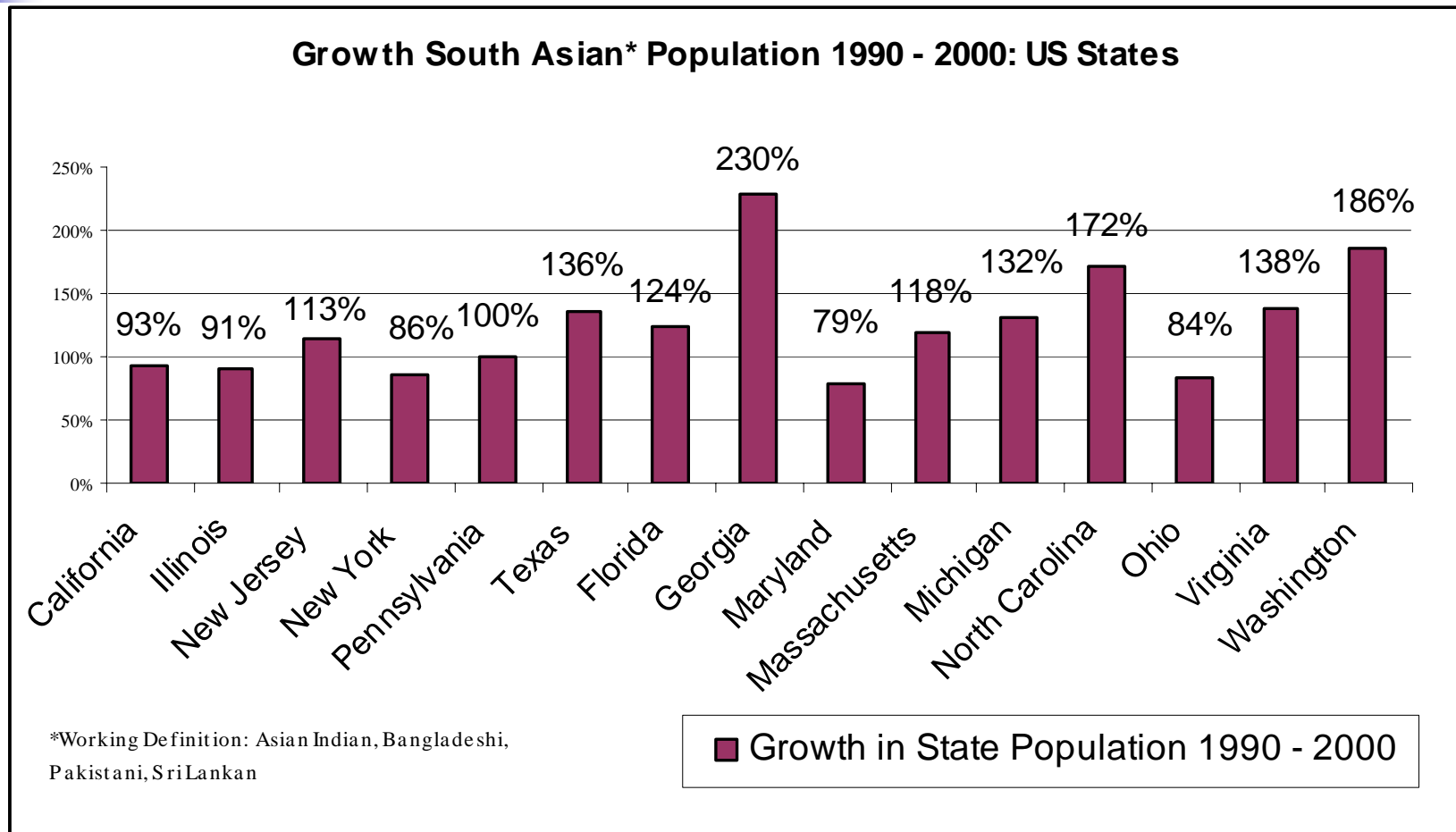


Source: US Census

1/25/2005

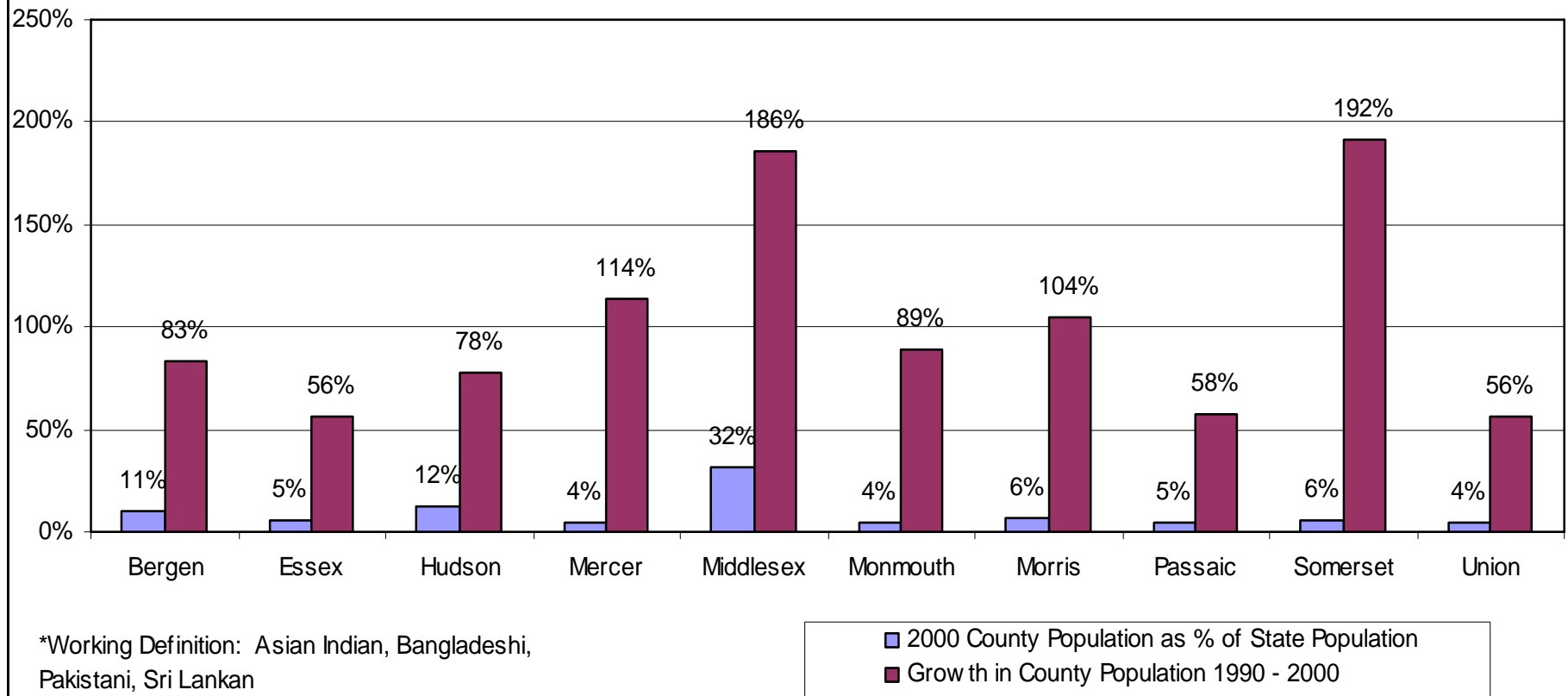
UMDNJ Office of Policy & Project
Management for UMDNJ Office of
Multicultural Affairs

South Asian American Population Growth 1990 – 2000: Geographic Distribution – US by State



South Asian American Population in 2000 and Growth: 1990/2000 – Top NJ Counties With Highest Population

South Asian* Population in 2000 and Growth 1990 - 2000: NJ Counties

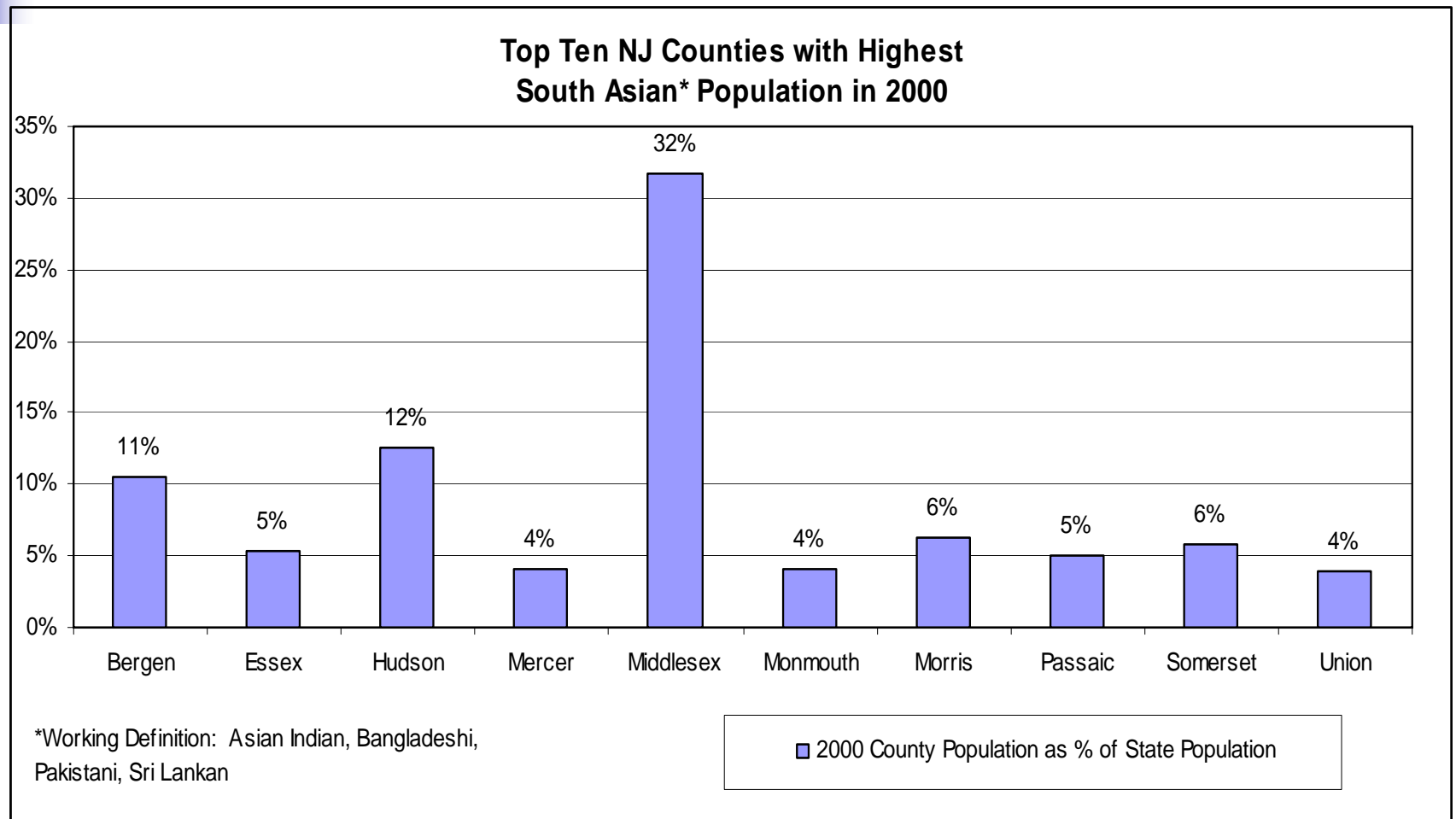


Source: US Census

UMDNJ Office of Policy & Project
Management for UMDNJ Office of
Multicultural Affairs

South Asian Population 2000

Top Ten NJ Counties with Highest Population



Source: US Census

UMDNJ Office of Policy & Project
Management for UMDNJ Office of
Multicultural Affairs

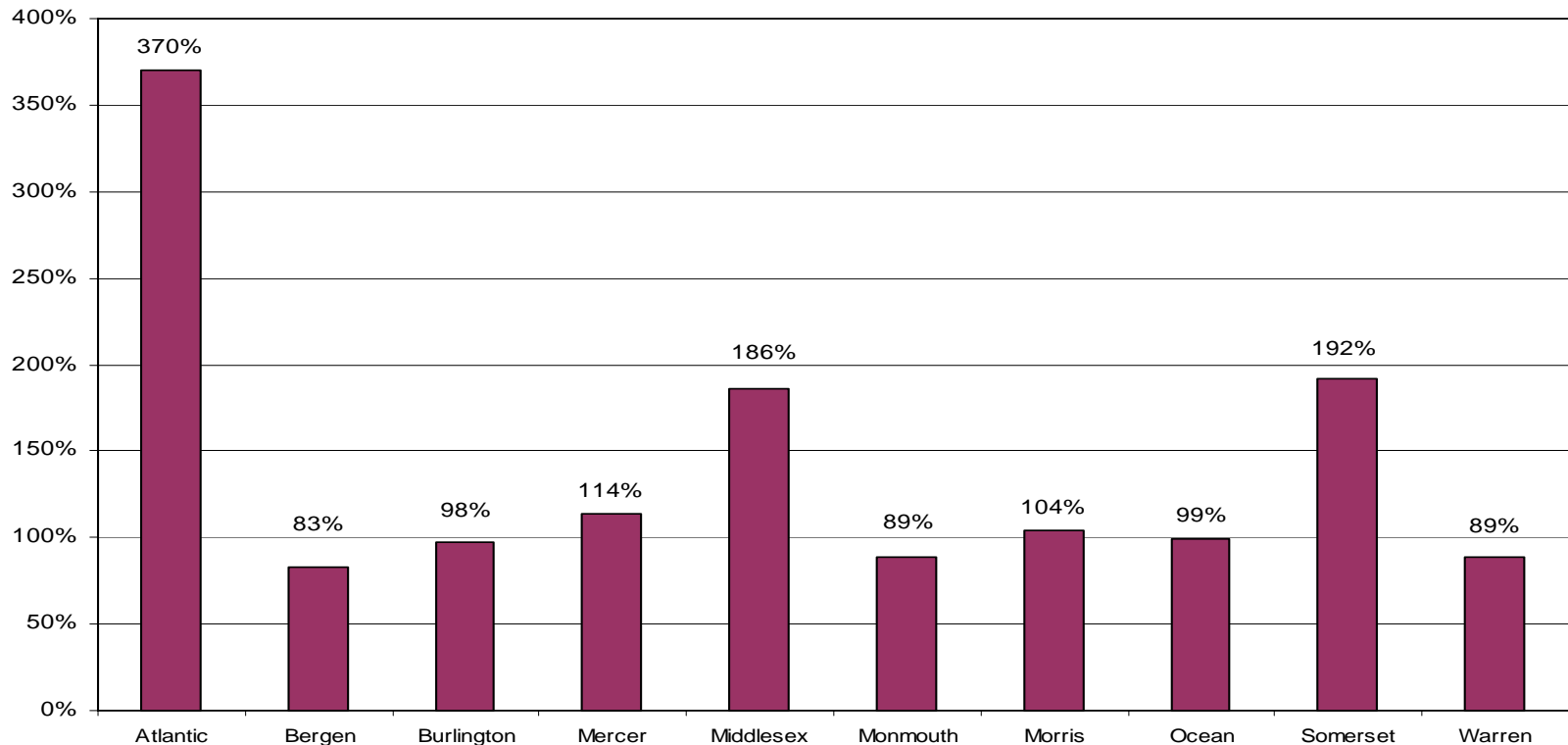
1/25/2005

10

South Asian Population 1990 - 2000

Top Ten NJ Counties with Highest Growth

**Top Ten NJ Counties with Highest Growth
South Asian* Population 1990 - 2000**



*Working Definition: Asian Indian, Bangladeshi, Pakistani and Sri Lankan

■ Top NJ Counties Highest Growth 1990 - 2000

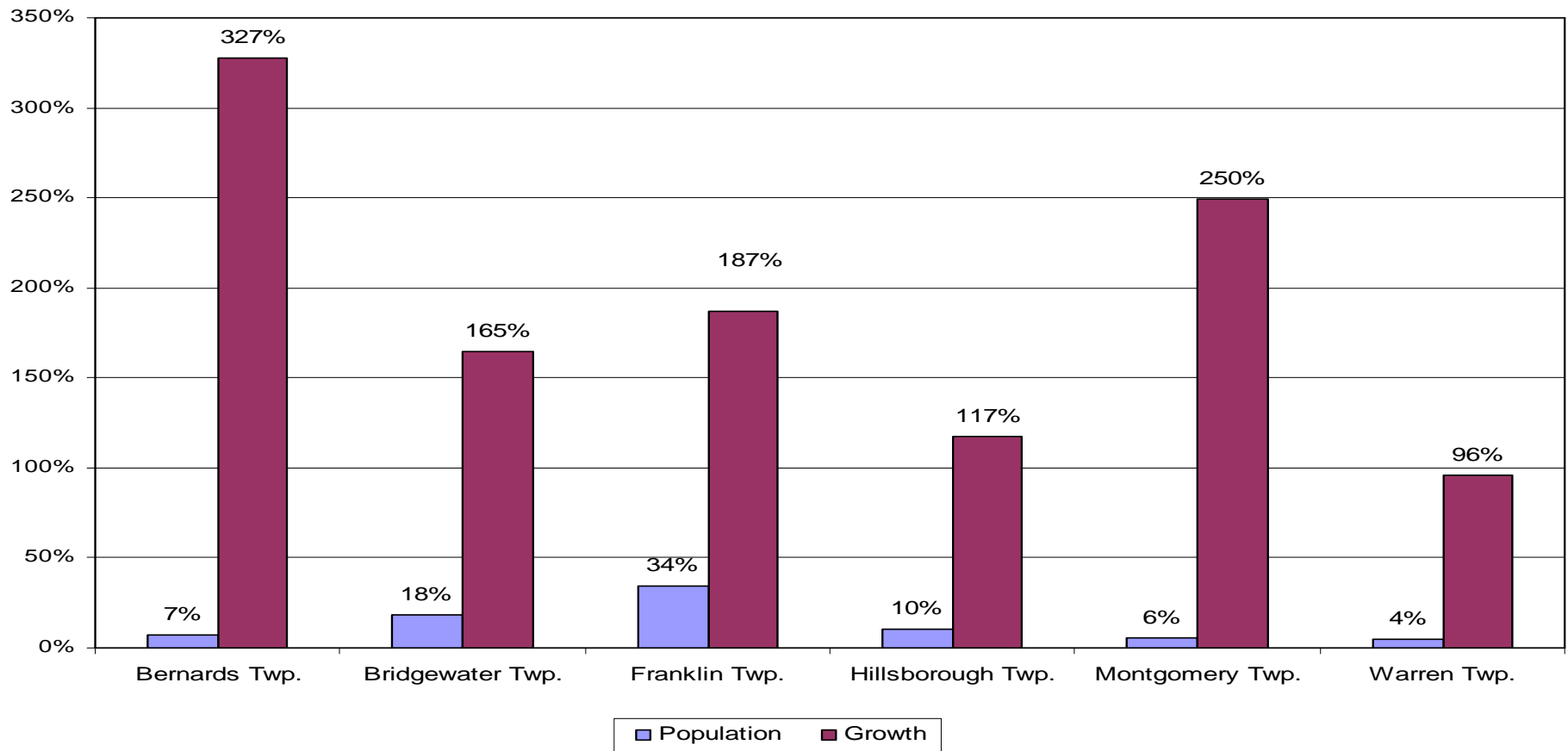
Source: US Census

UMDNJ Office of Policy & Project
Management for UMDNJ Office of
Multicultural Affairs

1/25/2005

Asian Indian* Population 2000 & Growth: 1990/2000 – Top Municipalities in Somerset

Asian Indian* Population in 2000 and Growth 1990 - 2000 Top Municipalities in Somerset

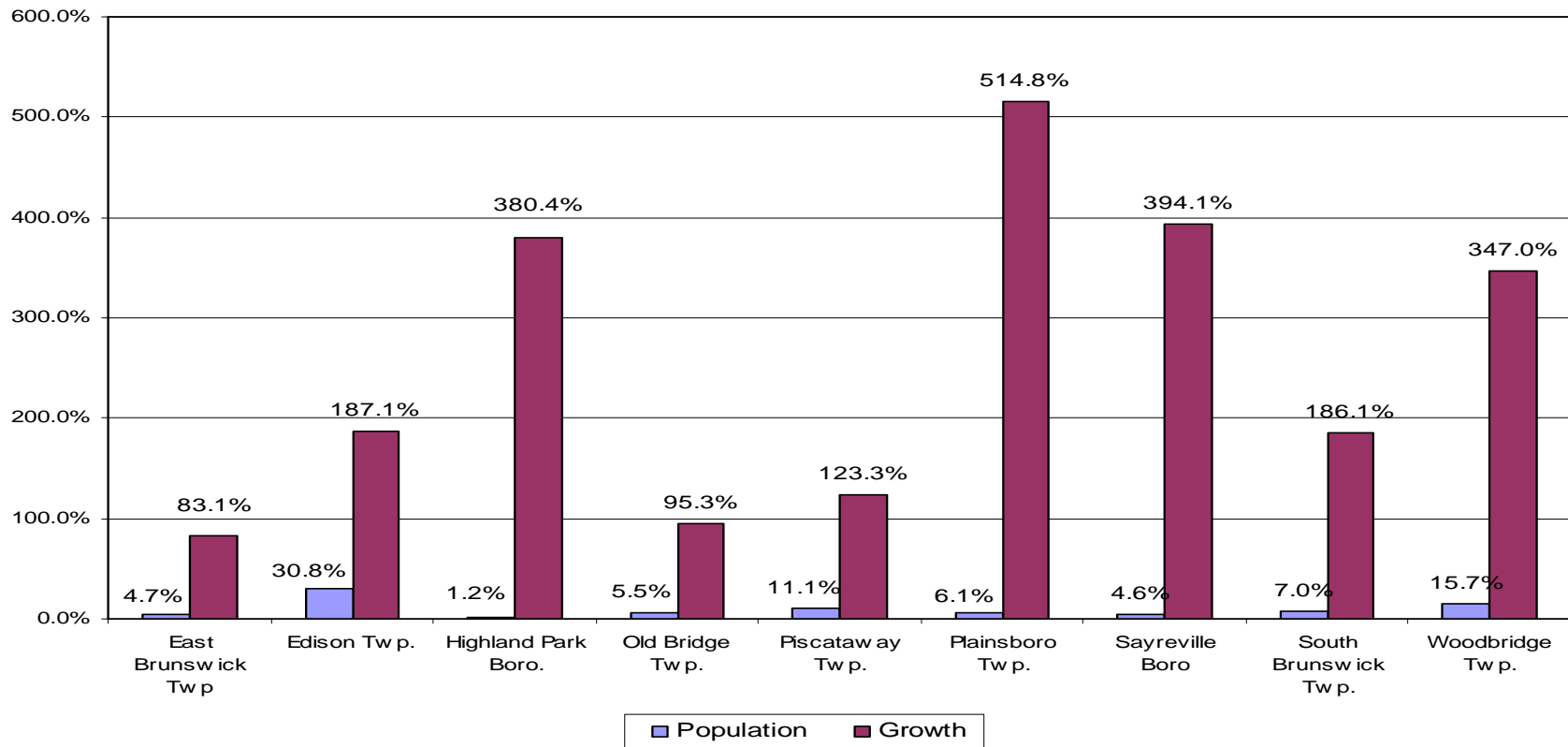


Source: US Census

UMDNJ Office of Policy & Project
Management for UMDNJ Office of
Multicultural Affairs

Asian Indian* Population 2000 & Growth: 1990/2000 – Top Municipalities in Middlesex

Asian Indian* Population in 2000 and Growth 1990 - 2000 top Municipalities in Middlesex



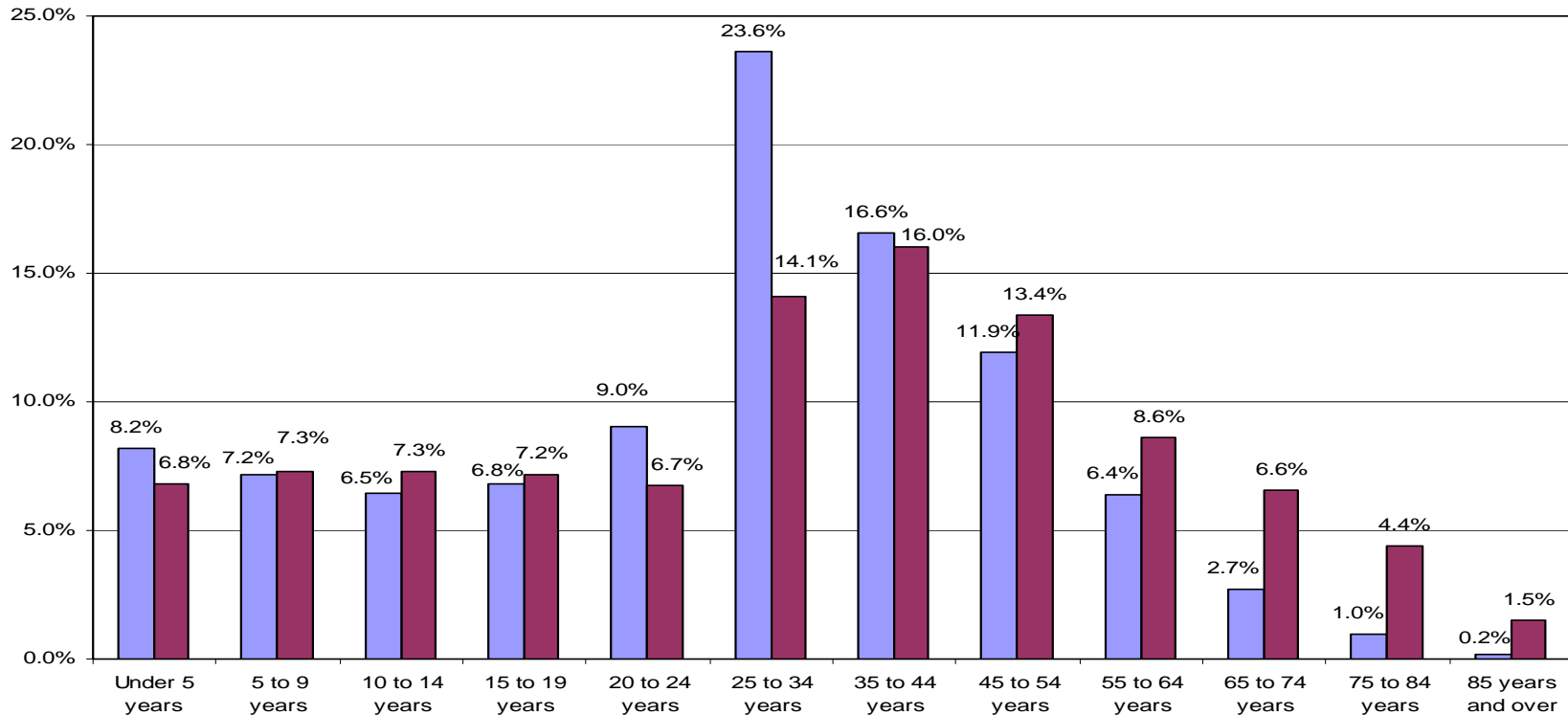
Source: US Census

UMDNJ Office of Policy & Project
Management for UMDNJ Office of
Multicultural Affairs

Age Distribution – US South Asian vs Non-South Asian 2000

Percentage US South Asian* Population vs US Non-South Asian* Population US Census 2000

(South Asian* Population: 1,893,723, Non-South Asian* Population: 279,528,183)



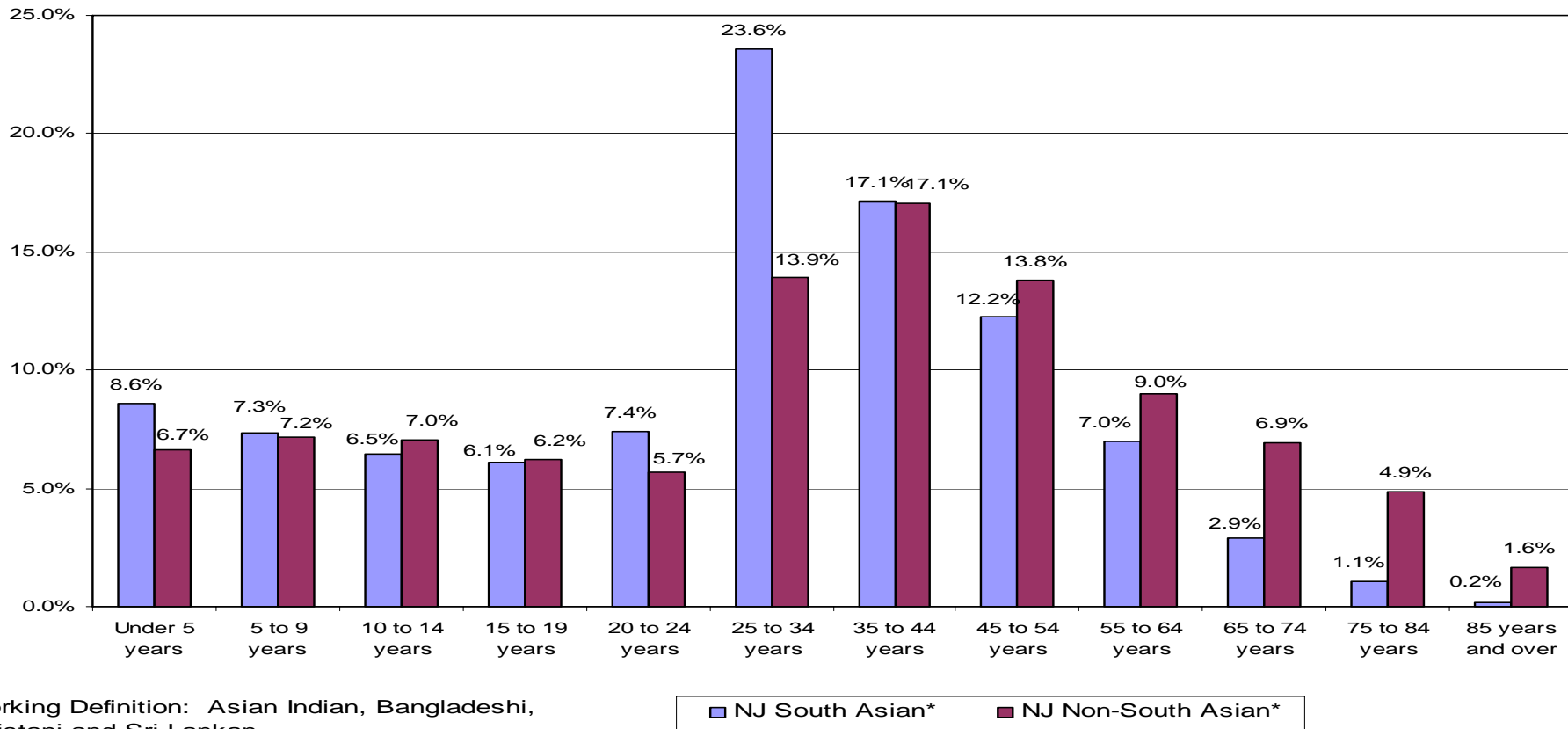
*Working Definition: Asian Indian, Bangladeshi, Pakistani and Sri Lankan

■ US South Asian* ■ US Non-South Asian*

Age Distribution – NJ South Asian vs Non-South Asian 2000

Percentage NJ South Asian* Population vs NJ Non-South Asian* Population US Census 2000

(South Asian* Population: 184,531, Non-South Asian* Population: 8,229,819)



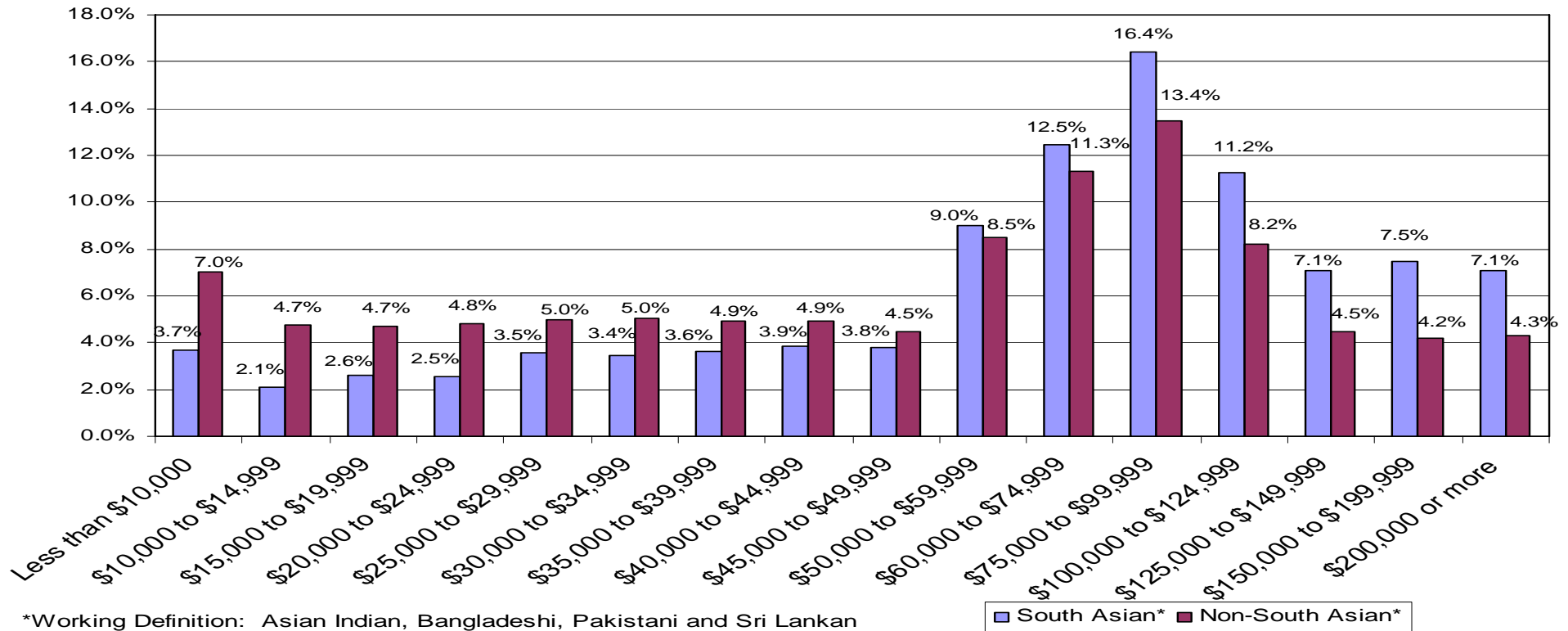
*Working Definition: Asian Indian, Bangladeshi, Pakistani and Sri Lankan

Source: US Census

UMDNJ Office of Policy & Project
Management for UMDNJ Office of
Multicultural Affairs

Percentage Household Income in NJ South Asian vs Non-South Asian 2000

**Percentage Household Income in NJ
South Asian* vs Non-Asian*
US Census 2000**

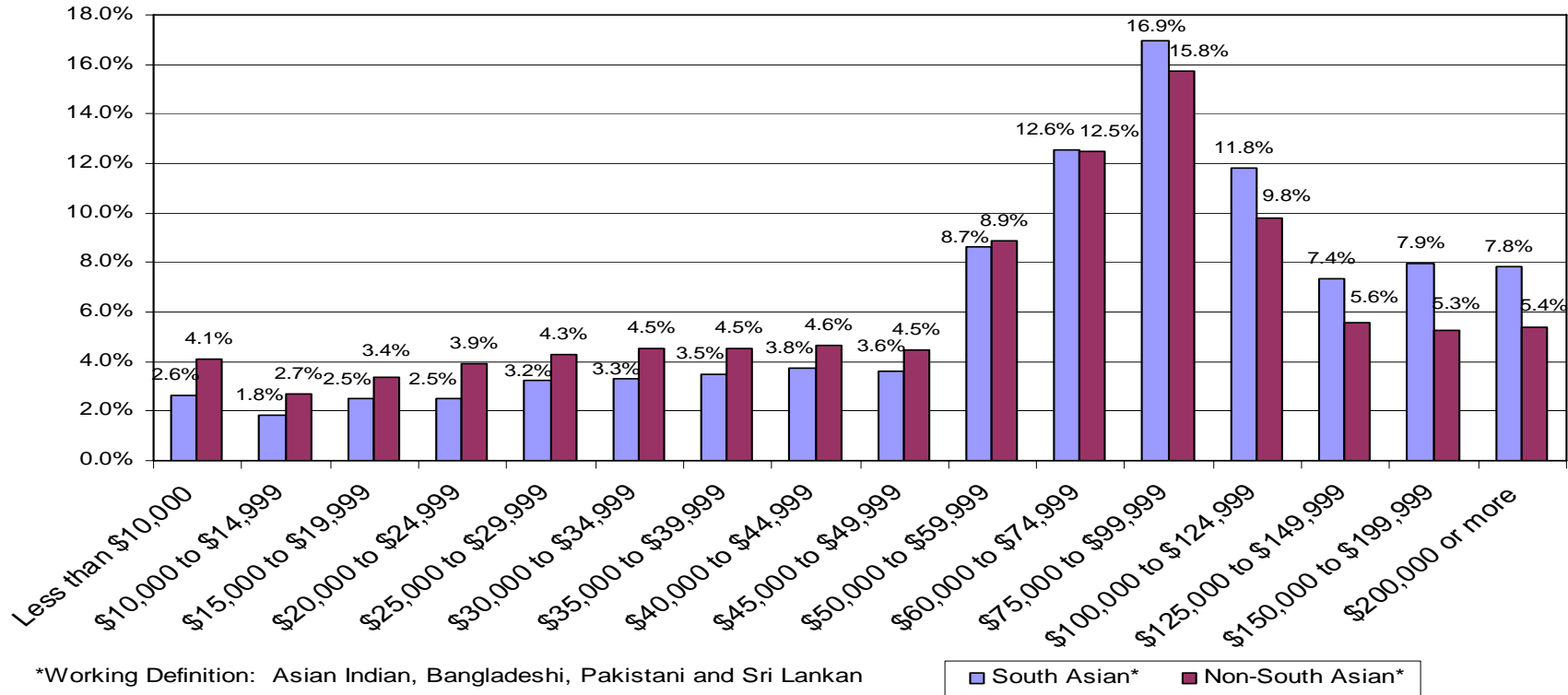


Source: US Census

UMDNJ Office of Policy & Project
Management for UMDNJ Office of
Multicultural Affairs

Percentage Family Income in NJ South Asian vs Non-South Asian 2000

**Percentage Family Income in NJ
South Asian* vs Non-South Asian*
US Census 2000**



Source: US Census

UMDNJ Office of Policy & Project
Management for UMDNJ Office of
Multicultural Affairs



South Asian Americans Profile

*Information on Asian Indians rather than South Asian is presented when comprehensive data is not available.

- Nationally third largest subgroup among Asians with the largest growth rate: 2000/1990
- Un-insurance rate of 21%
- Asian Indian* ranked 12th in National Poverty Level
- 25% of Asian Indians* have limited English Proficiency
- Significant religious, linguistic and cultural diversity within the group
- Issues: Cardiovascular Disease, Hypertension, Diabetes, Mental Health, Women's Health, Cancer, Elder Care, Oral Health, Diet/Nutrition, etc.



Diabetes in South Asians

Global Statistics:

- People of South Asian origin are 4-5 times more likely to develop type 2 diabetes than Caucasians.
- Compared to Caucasian children, South Asian children demonstrate higher average levels of insulin and insulin resistance.

Source:

The 2003/2004 American Association of Physicians of Indian Origin (AAPI) Medical Students/Residents/Fellows (MS/R/F) National Service Project: Diabetes and Heart Disease Awareness in South Asians

UMDNJ Office of Policy & Project
Management for UMDNJ Office of
Multicultural Affairs



Coronary Artery Disease in South Asians

Global Statistics: (1 of 2)

- The death rates from CAD among overseas Asian Indians* have been 50% to 300% higher than Americans, Europeans, Chinese, and Japanese, irrespective of gender, religion, or social class.
- Among those younger than 30 years of age, the CAD mortality among Asian Indians* is 3-fold higher than Whites in the United Kingdom (U.K.) and 10-fold higher than Chinese in Singapore.



Coronary Artery Disease in South Asians

Global Statistics: (2 of 2)

- About 50% of all heart attacks among Asian Indian* men occur under the age of 55 and 25% under the age of 40.
- Asian Indian* women have a higher death rate from CAD than women of all other ethnic origins in the U.K., South Africa, Canada, Singapore, Fiji, Mauritius, Uganda, and Trinidad.
- For any given level of risk factors, the CAD risk among Asian Indians is at least double that of Whites.



Current Situation

- Victim of “model minority” myth; relatively higher socioeconomic status of a smaller segment tends to overshadow plights of a growing larger segment.
- Significant disparities in health status, health risks, access and disease burdens.
- Paucity of disaggregated and reliable data.
- Limited research to date on status, needs, health seeking behavior, interventions and outcomes.