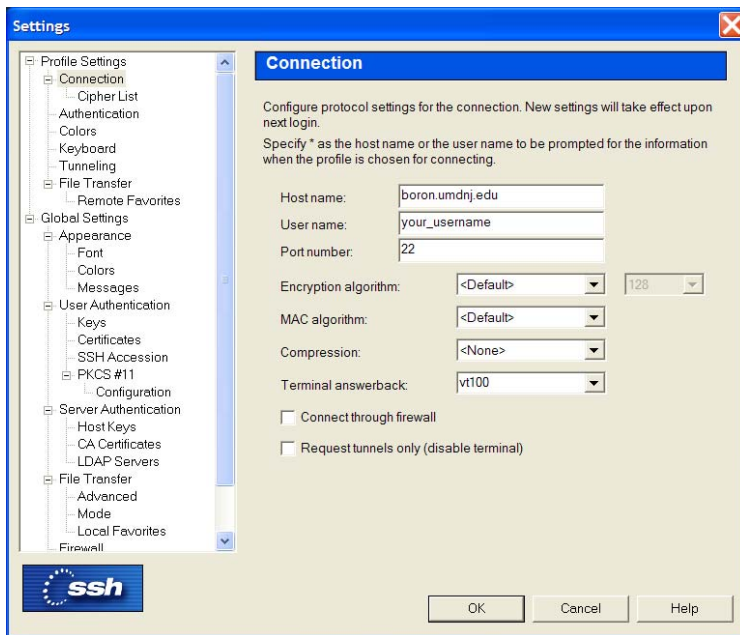


## Accessing the V12 Lab machines from the Newark computer lab using Reflection X via SSH tunnel.

Step 1. Launch Reflection X from Start > All Programs > WRQ Reflection > Reflection X

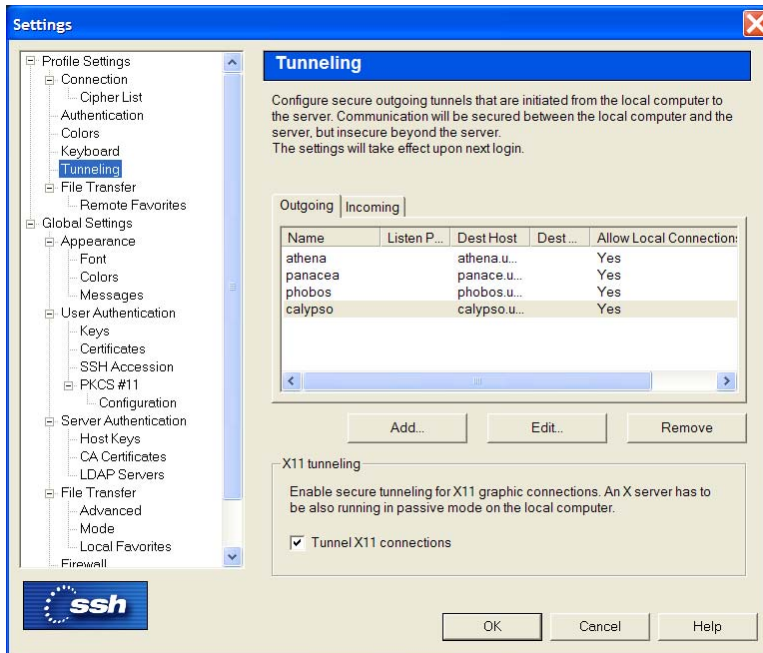
Step 2. Open the Windows SSH Client from the Communications folder on the Windows Desktop.

Step 3. Go to Edit > Settings...



Enter the desired Host name of the workstation you wish to use (In V12 the 14 workstations are named for the 1<sup>st</sup> elements in the periodic table. DO NOT USE HYDROGEN, as hydrogen is the test box.) Enter your username. DO NOT Click OK just yet!

Next select “Tunneling” under Connection. Your dialog box should now change to ...



Make sure the “Tunnel X11 connections” box is checked in the X11 tunneling section. Now click OK.

Use the “Quick Connect” button to login (Answer “YES” or accept your settings changes).

You should now be able to run X-Window programs from the command line. Some programs might not run due to OpenGL library incompatibilities.